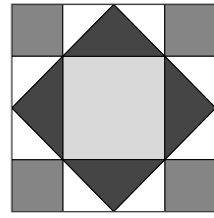


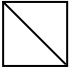
Kings Crown


Instructions are given for an eight (twelve) inch block.


- Kings Crown is a simple four-patch block – that is, it is made up from four (or in this case 16) smaller units.
- It is best made to finish at a size that is a multiple of 4 – i.e. 8 inches or 12 inches etc.
- You will need a minimum of three fabrics including a background.




Cutting

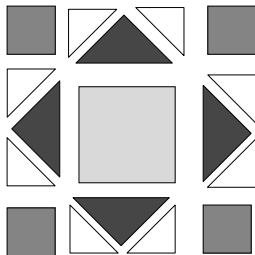
 From light cut:
4, $2\frac{7}{8}$ " ($3\frac{7}{8}$ ") squares; cut in 2 diagonally

 From medium cut:
4, $2\frac{1}{2}$ " ($3\frac{1}{2}$ ") squares

 From dark cut:
1, $5\frac{1}{4}$ " ($7\frac{1}{4}$ ") squares; cut in 4 diagonally.

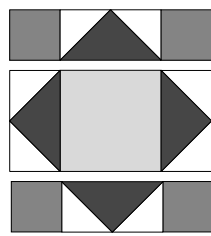
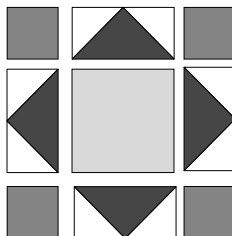
 From contrast cut:
1, $4\frac{1}{2}$ " ($6\frac{1}{2}$ ") square

Making the block



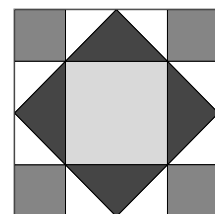
Lay block pieces out as shown.

Stitch units.



Stitch units into rows.

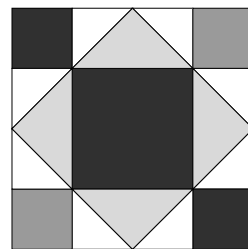
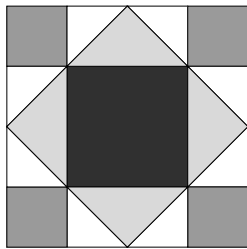
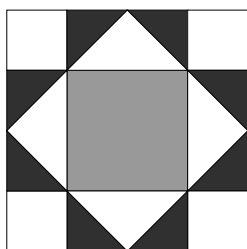
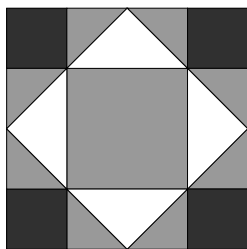
Stitch rows to complete Kings Crown.



Ideas

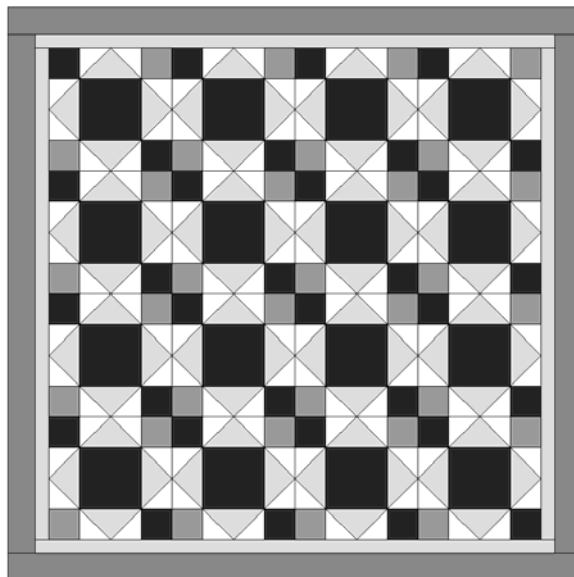
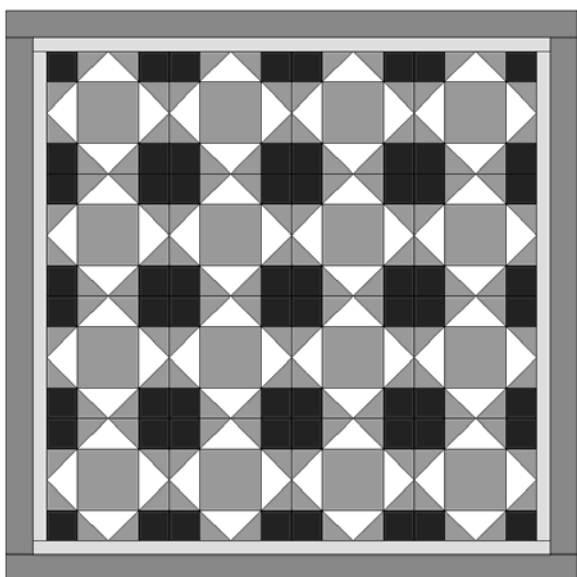
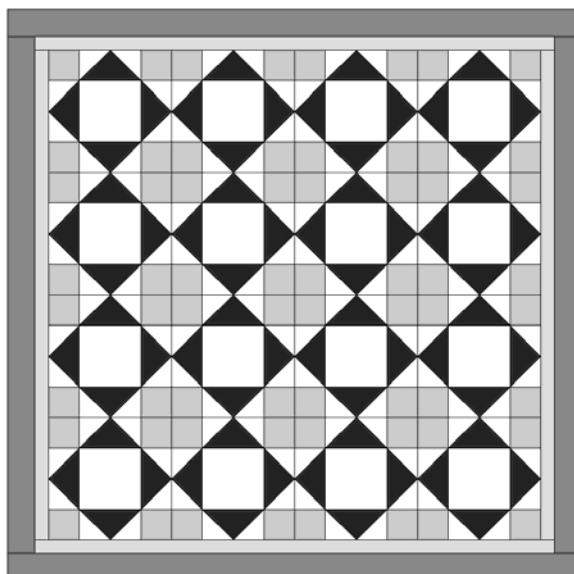
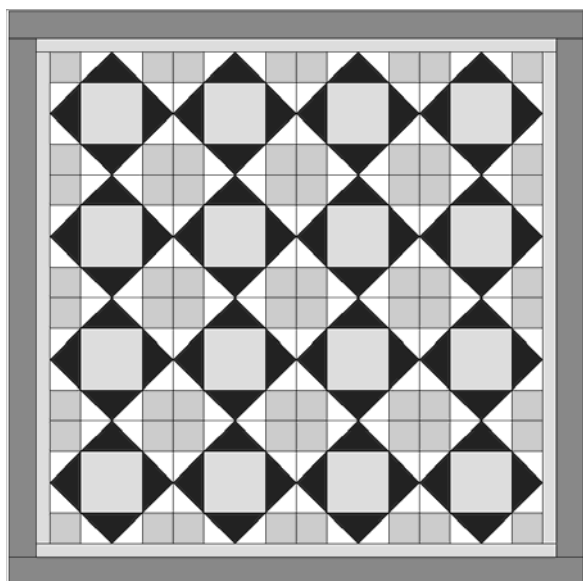
Blocks

Change the emphasis of light and dark in the block

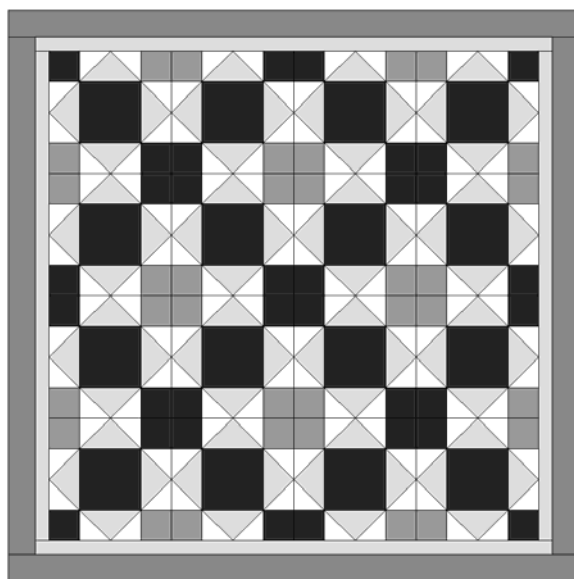
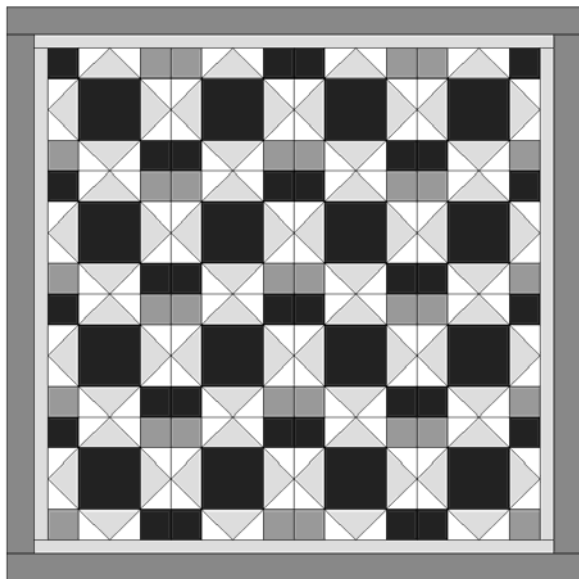


Quilts

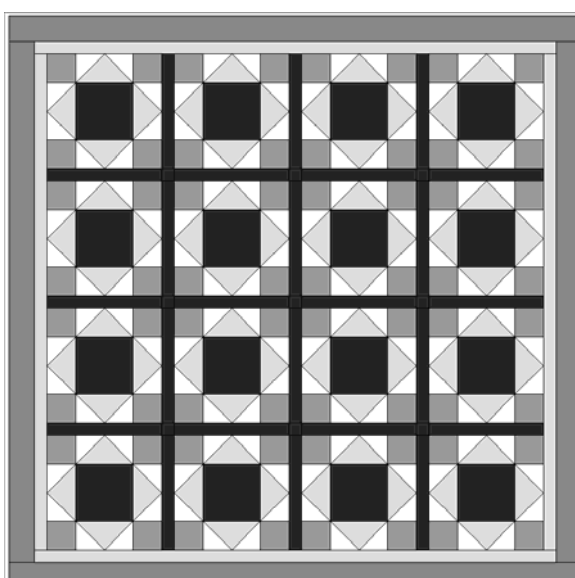
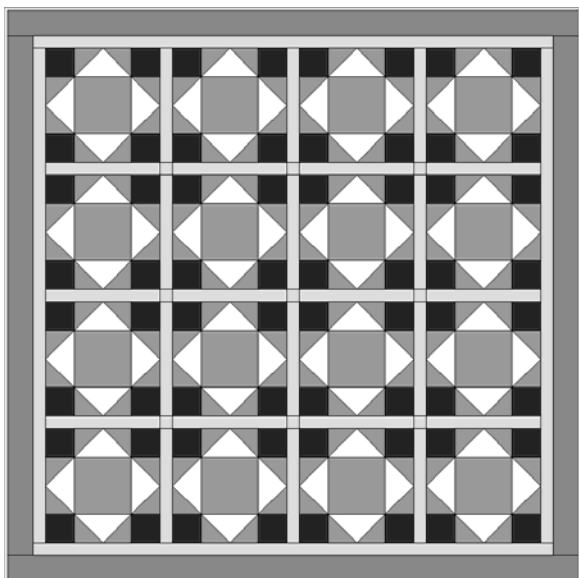
Set blocks together 4 x 4. The blocks are symmetrical so turning them will not make new designs....



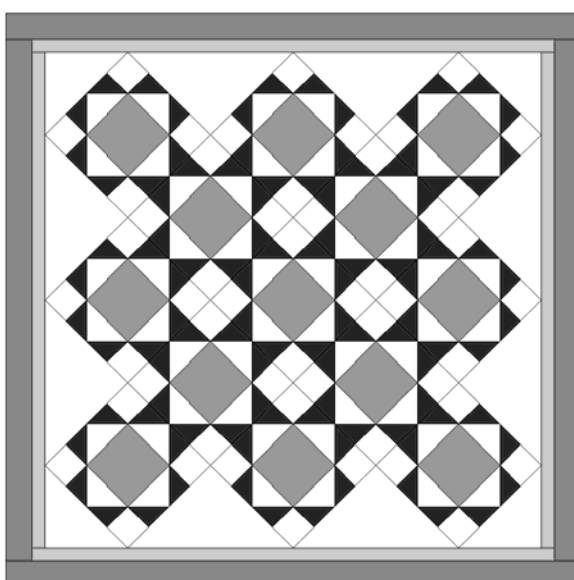
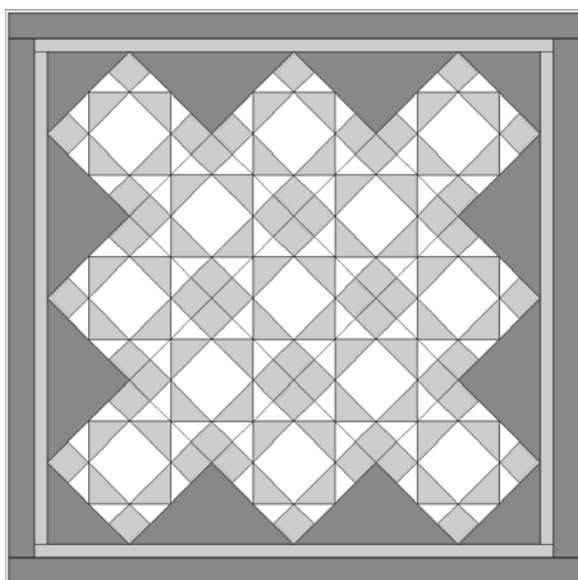
...unless you use an asymmetrical colouring such as the last one above



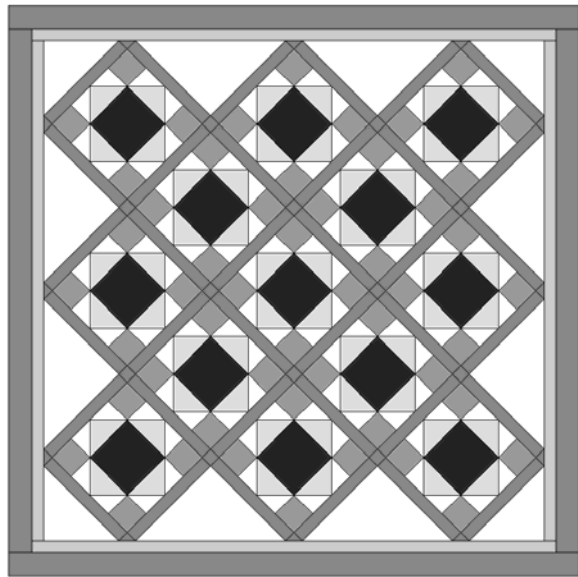
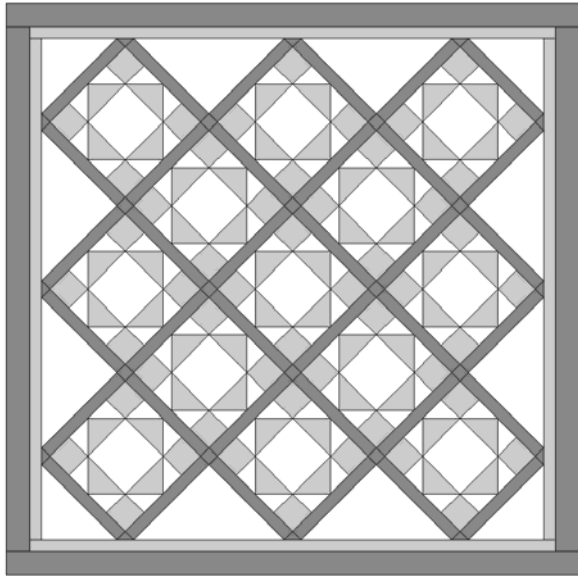
Straight set with sashing



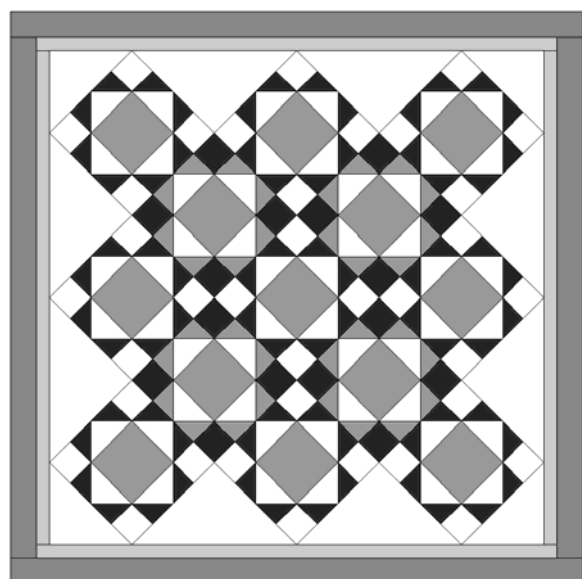
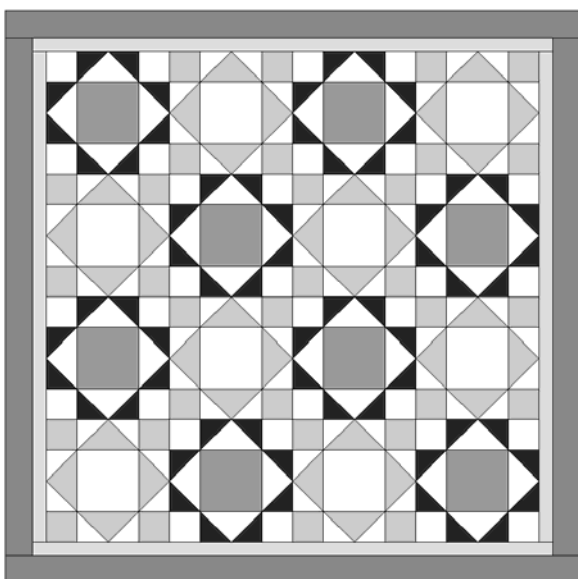
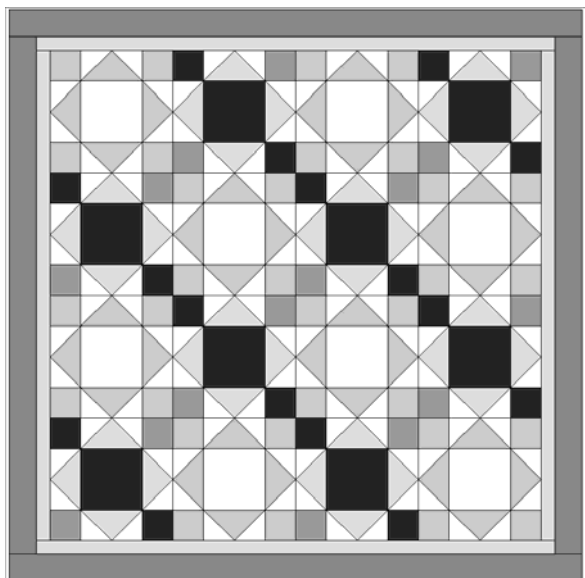
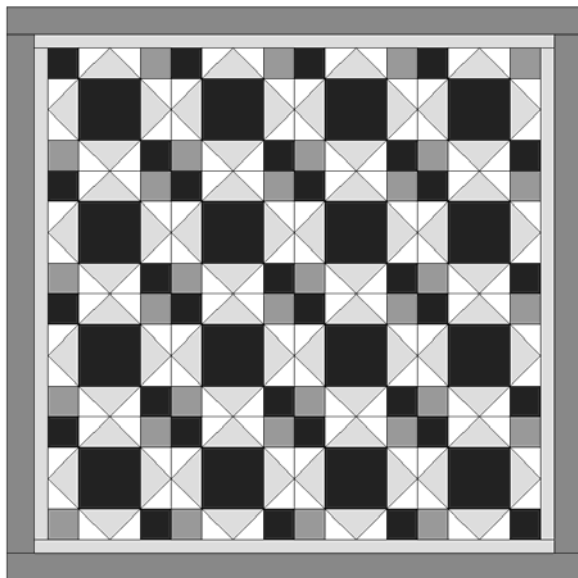
Set blocks on point



Set blocks on point with sashing



Set two different block colourings together



Add a pieced border

